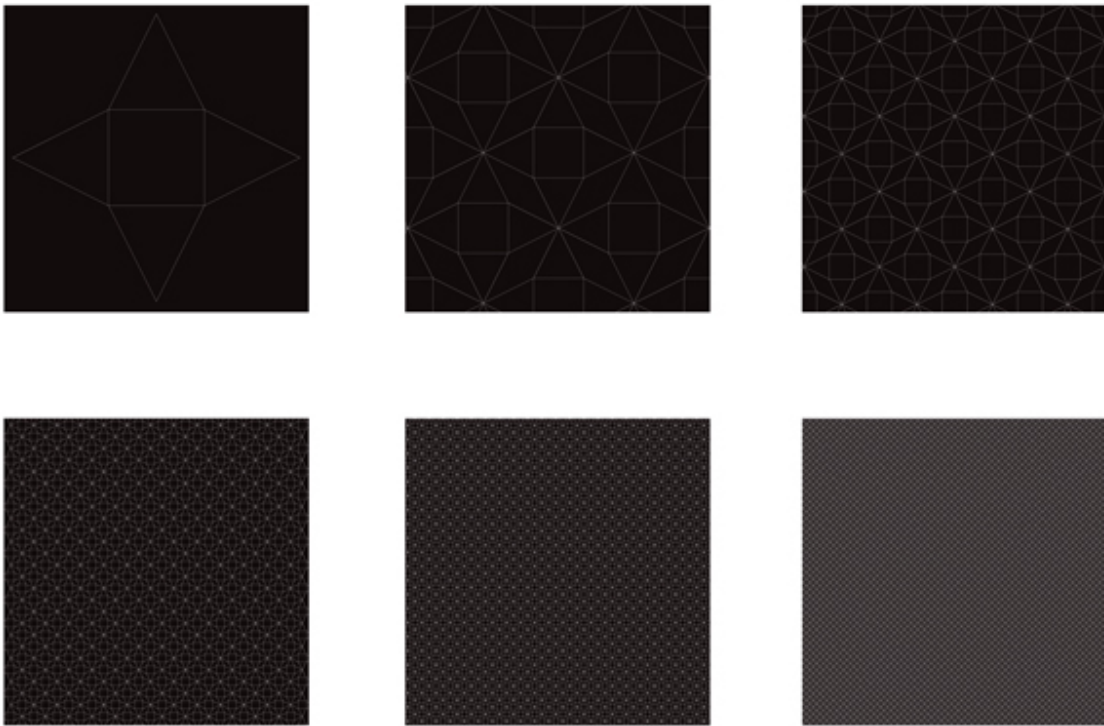


# GEOMETRY AT THE PLANCK SCALE



Geometry at the Planck Scale by Saeed Salimpour

This series of posters uses two basic geometrical shapes the square and triangle in a repeating pattern series to give rise to circles when the pattern is zoomed out.

Each panel zooms out a bit more to reveal more of the entire pattern.  
In the fourth panel, the circles start becoming evident.

Nature, has many examples of simple geometry that have given rise to complex structures, and based on this premise, there is the potential that as our experiments get better we maybe able to resolve this geometry. This geometry could permeate the foundations of the Universe at the smallest scales, close to the Planck scale.